

ENVISION
NAPIER/SUDEKUM
CHOICE NEIGHBORHOODS
PLANNING GRANT

Town Hall Meeting

03/16/2017

Agenda

1. Welcome and Introductions
2. Executive Director Remarks
3. Work Group Updates
4. Architect and Engineering Firm Introduction
5. Needs Assessment Update
6. Health Equity Impact Tool Outline
7. Q&A

Work Group Leadership

- People
 - Sheronda Wilson
 - Vickeeta Coleman
- Education
 - Angela Cole
 - Rob McRay
- Housing
 - Jessica Stadelbaur
 - Pastor Judy Quarles
- Neighborhood
 - Varnella Edmiston
 - Beverly Hall

Architect and Engineering Firm

MOODY•NOLAN

Kimley»»Horn

LORD
AECK
SARGENT



Needs Assessment Schedule

- Survey Proctor Orientation: 03.22.17
- Survey Proctor Training: 04.19.2017
- Survey Launch/Kick-off: 04.28.2017
- Active Target Neighborhood Surveying:
05.1.2017 – 05.15.2017

health equity impact review

Envision Napier and Sudekum

John Vick, PhD

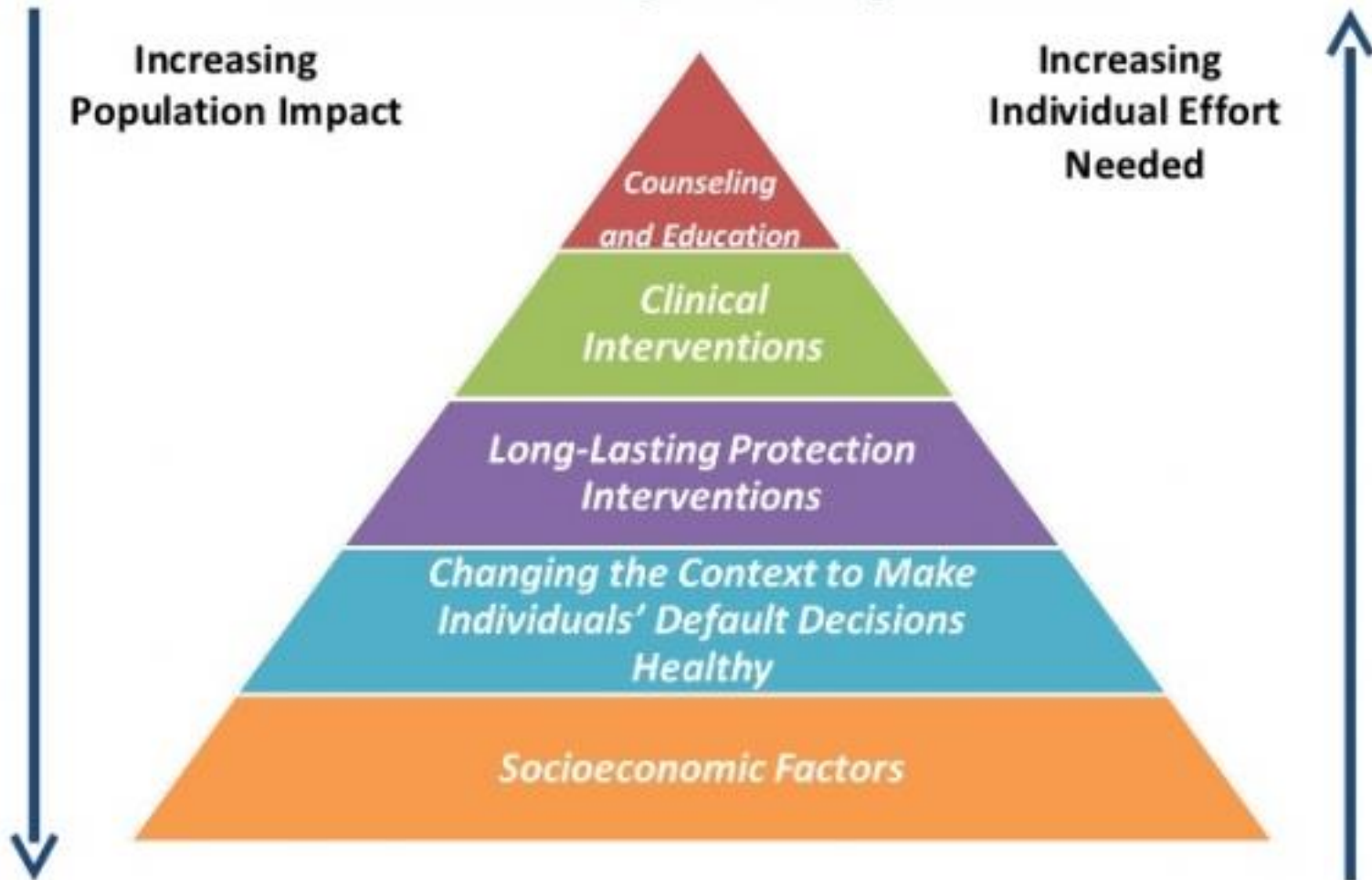
Epidemiologist | Division of Epidemiology

Metro Nashville Public Health Department



*Metro***Public Health Dept**
Nashville/Davidson County
Promoting and Protecting Health

Health Impact Pyramid





Equality

doesn't mean



Equity

equity impact review tool

Assess potential impacts of a proposal on health equity

Factors that impact health equity

Healthy food access

Safe and affordable housing

Supportive neighborhoods

Safe and clean places to play

Education and early childhood development services

Job training and living wage jobs

Public safety services

Legal services

Transportation

Health and human services

Local businesses and economic development

equity impact review tool

How we plan to use it

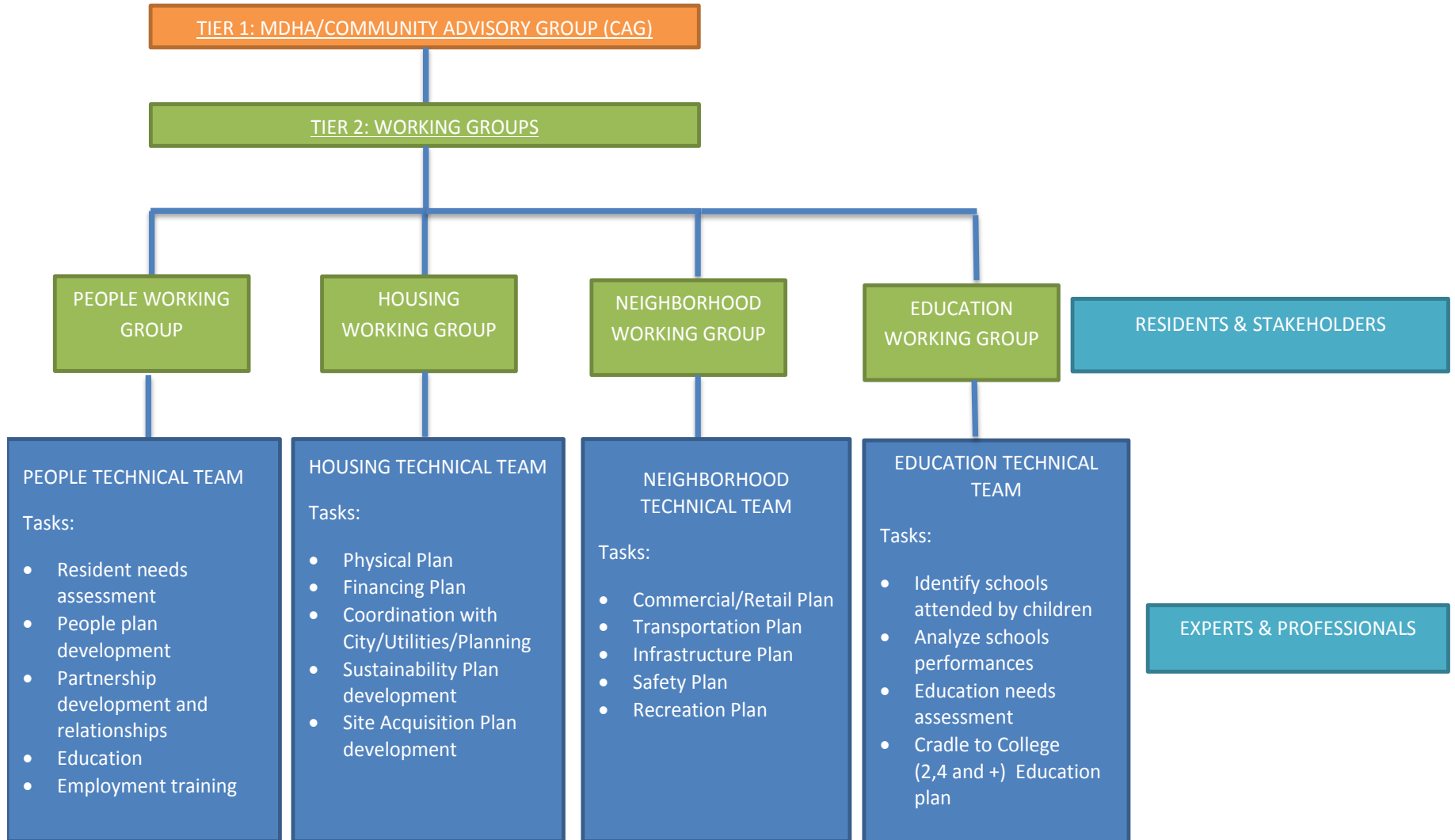
Review the *Community Needs Assessment Survey* questions and provide feedback

Review the Community Plan and provide feedback

Create a Healthy Development Check

contact | john.vick@nashville.gov

Governance Structure



MDHA Properties

- 1-Sudekum
- 2-Napier

Schools

- 3-Napier Elementary
- 4-Cameron College Prep
- 5-Johnson School,
- 6- Trevecca, Nazarene University

Public Spaces

- 7-Napier Park/Recreation Center
- 8- Mildred Shute Mini-park
- 9- Dudley Park/Dudley Head Start
- 10- Nashville City Cemetary
- 11- Nashville Public Library Pruitt Branch

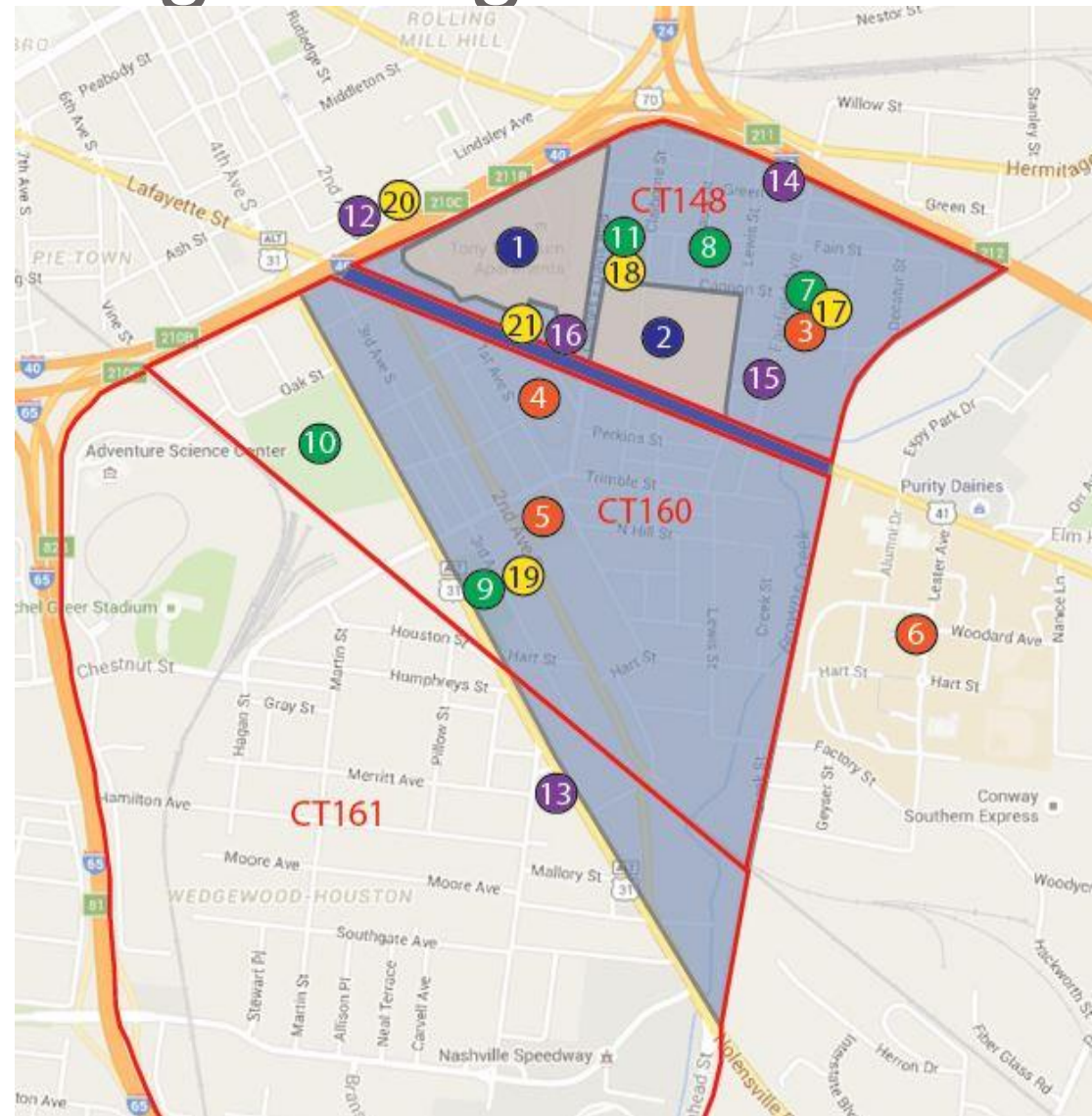
Religious Institutions

- 12- Lindsley Avenue Church of Christ
- 13- Al-Frooq Islamic Center
- 14- St. Luke Primitive Baptist Church
- 15- Mt. Ararat Baptist Church
- 16- Church of the Messiah

Social Services

- 17 - Napier Community Center
- 18 - Neighborhood Health at Napier Place
- 19 - Safe Haven Family Shelter
- 20- Wayne Reed Christian Childcare Center
- 21- Dollar General/Southside Enterprise Center

Target Neighborhood



DISCUSSION

1. Opportunities and Challenges
2. Community Vision and Options

Timeline and Schedule

- See Agenda
- Questions

Upcoming Meetings

April 2017

<p>People Work Group Tuesday, April 18, 2017 11:30 to 1 p.m. Lunch Provided Sudekum Community Room</p>	<p>Housing Work Group Tuesday, April 25, 2017 11:30 to 1 p.m. Lunch Provided Napier Place Mgt. Office</p>
<p>Education Work Group Thursday, April 20, 2017 11:30 to 1 p.m. Lunch Provided Sudekum Community Room</p>	<p>Neighborhood Work Group Thursday, April 27, 2017 11:30 to 1 p.m. Lunch Provided Napier Place Mgt. Office</p>
<p>Resident-Based Focus Group with Moody Nolan Wednesday, April 26, 2017 117 Charles E. Davis Blvd. (Pruitt Library) 12 to 1:30p.m. Lunch Provided</p>	

HAVE QUESTIONS OR COMMENTS?

Email

ChoiceNeighborsENS@Nashville-MDHA.org

Hotline

615-780-7067

@NashvilleMDHA

